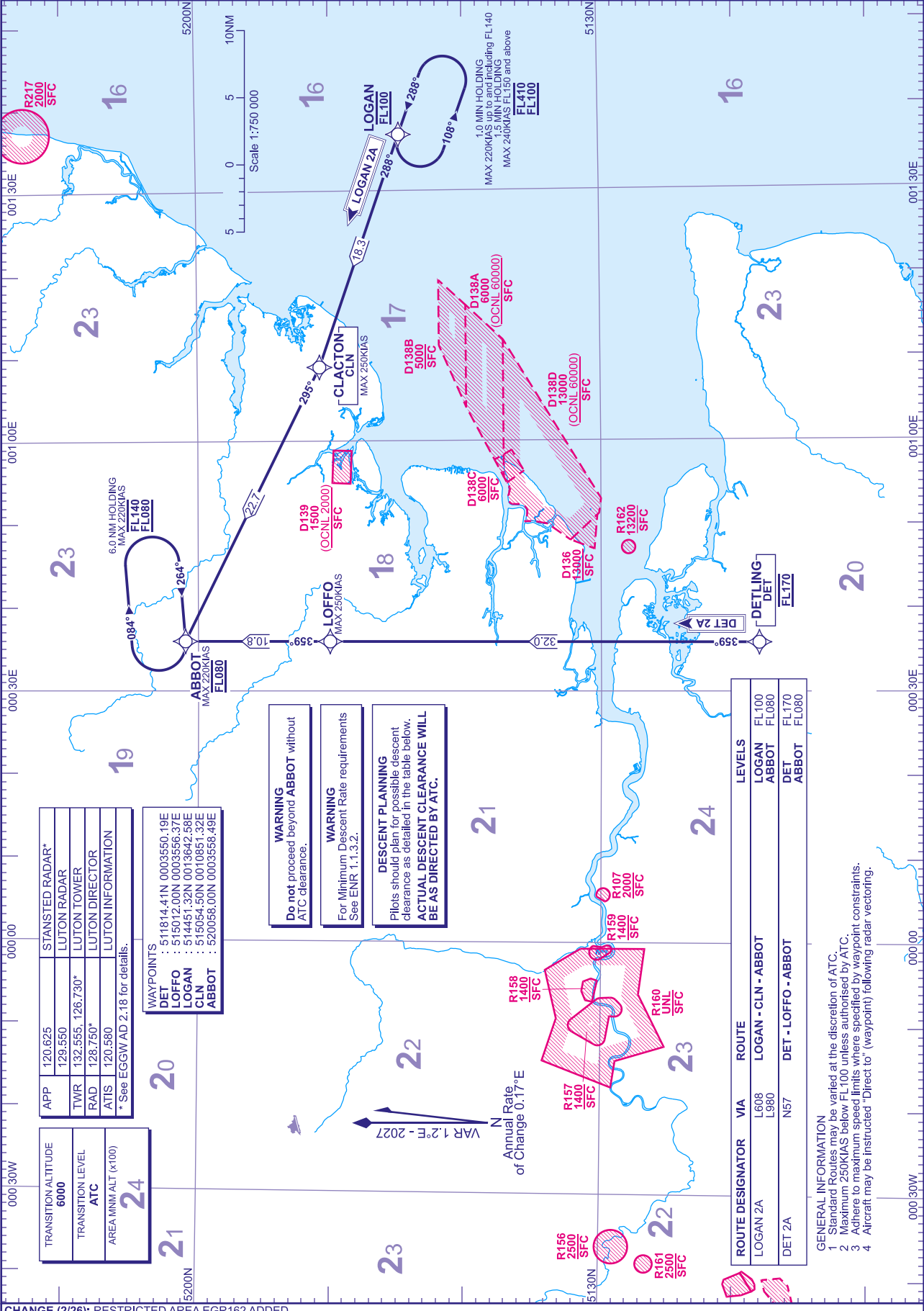


RNAV5 (DME/DME or GNSS)
STANDARD ARRIVAL CHART -
INSTRUMENT (STAR) - ICAO

DISTANCES IN NAUTICAL MILES
TRACKS ARE MAGNETIC
ALTITUDES AND ELEVATIONS ARE IN FEET

LONDON LUTON
LOGAN 2A DET 2A



APP	120.625	STANSTED RADAR*
TWR	129.550	LUTON RADAR
RAD	128.750*	LUTON TOWER
ATIS	120.580	LUTON DIRECTOR
* See EGGW AD 2.18 for details.		

WAYPOINTS
DET : 511814.41N 0003550.19E
LOFFO : 515012.00N 0003556.37E
LOGAN : 514451.32N 0013642.58E
CLN : 515054.50N 0010851.32E
ABBOT : 520058.00N 0003558.49E

TRANSITION ALTITUDE	6000
TRANSITION LEVEL	ATC
AREA MIM ALT (x100)	24

WARNING

Do not proceed beyond ABBOT without ATC clearance.

WARNING

For Minimum Descent Rate requirements See ENR 1.1.3.2.

DESCENT PLANNING

Pilots should plan for possible descent clearance as detailed in the table below.
ACTUAL DESCENT CLEARANCE WILL BE AS DIRECTED BY ATC.

ROUTE DESIGNATOR	VIA	ROUTE	LEVELS
LOGAN 2A	L608 L980	LOGAN - CLN - ABBOT	FL100 ABBOT FL080
DET 2A	N57	DET - LOFFO - ABBOT	DET FL170 ABBOT FL080

- GENERAL INFORMATION
- Standard Routes may be varied at the discretion of ATC.
 - Maximum 250KIAS below FL100 unless authorised by ATC.
 - Adhere to maximum speed limits where specified by waypoint constraints.
 - Aircraft may be instructed "Direct to" (waypoint) following radar vectoring.